

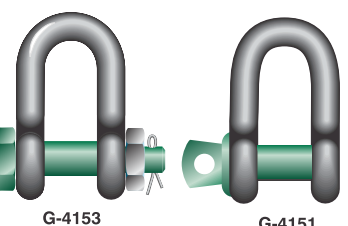
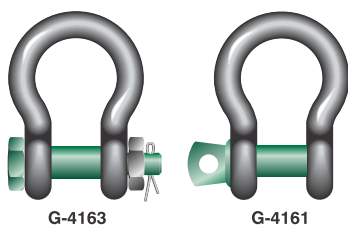


SHACKLES

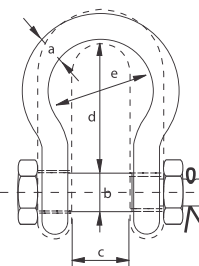
Green Pin from Van Beest is a premium European manufactured shackle respected worldwide and has become synonymous with exceptional quality, safety and professional reliability.

Green Pin® Standard Shackles

- **Material** : Bow and pin high tensile steel, Grade 6, quenched and tempered
- **Safety Factor** : MBL equals 6 x WLL
- **Standard** : EN 13889 and meets performance requirements of US Fed. Spec. RR-C-271
DNV type approved to certification note 2.7-1
- **Finish** : Hot dipped galvanized
- **Temperature Range** : -20°C up to +200°C

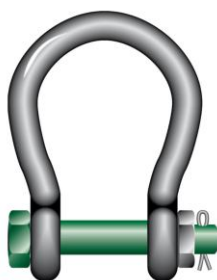


Working Load Limit	Body Diameter	Pin Diameter	Inside Width	Inside Length		Inside Width	Shackle Weight	
				Dee	Bow		Screw Pin	Safety Bolt
				d	d		Kg	Kg
tons	a mm	b mm	c mm	d mm	d mm	e mm	Kg	Kg
0.33	5	6	9.5	19	22	16	0.02	--
0.5	7	8	12	22	29	20	0.05	0.06
0.75	9	10	13.5	26	32	22	0.10	0.11
1	10	11	17	32	36.5	26	0.14	0.16
1.5	11	13	19	37	43	29	0.19	0.22
2	13.5	16	22	43	51	32	0.36	0.42
3.25	16	19	27	51	64	43	0.63	0.74
4.75	19	22	31	59	76	51	1.01	1.18
6.5	22	25	36	73	83	58	1.50	1.77
8.5	25	28	43	85	95	68	2.21	2.58
9.5	28	32	47	90	108	75	3.16	3.66
12	32	35	51	94	115	83	4.31	4.91
13.5	35	38	57	115	133	92	5.55	6.54
17	38	42	60	127	146	99	7.43	8.19
25	45	50	74	149	178	126	12.84	14.22
35	50	57	83	171	197	138	18.15	19.85
42.5	57	65	95	190	222	160	26.29	28.33
55	65	70	105	203	260	180	37.6	39.59
85	75	83	127	229	329	190	--	62

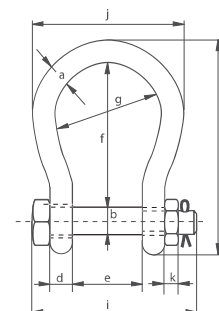


Green Pin® Wide Mouth Shackles

- **Material** : Bow and pin alloy steel, Grade 8, quenched and tempered
- **Safety Factor** : MBL equals 6 x WLL
- **Standard** : ASME B30.26
- **Finish** : Hot dipped galvanized
- **Temperature Range** : -20°C up to +200°C



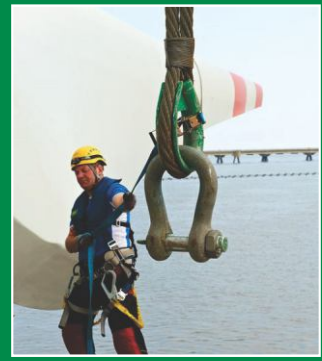
Working Load Limit	Body Diameter	Pin Diameter	Inside Width	Inside Length	Inside Width	Shackle Weight
tons	a mm	b mm	c mm	d mm	e mm	Kg
4.75	22	25	63	112	88	2.08
6.5	25	28	75	135	105	3.14
8.5	28	32	82	148	115	4.36
9.5	32	35	90	162	126	5.95
12	35	38	100	180	140	7.87
25	45	50	127	248	175	16.70



Netherlands

• Certification

: At no extra charges this product can be supplied with a works certificate, material certificate, manufacturer test certificate and/or EC Declaration of Conformity

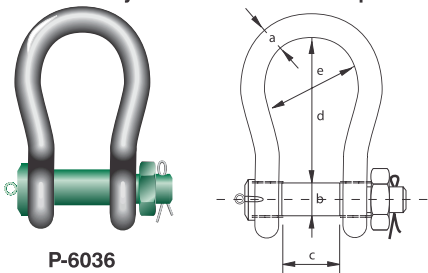


SHACKLES & WIRE ROPE CLIPS

Green Pin from Van Beest is a premium European manufactured shackle respected worldwide and has become synonymous with exceptional quality, safety and professional reliability.

Green Pin® Heavy Duty Shackles

- Material** : Bow and pin alloy steel, Grade 8, quenched and tempered
- Safety Factor** : MBL equals 5 x WLL
- Finish** : Shackle bow painted silver, pin painted green (120 tons shackle is hot dipped galvanized)
- Certification** : At no extra charges this product can be supplied with a works certificate, material certificate, manufacturer test certificate, EC Declaration of Conformity and all shackles starting from 150 tons are supplied with a Lloyd's Register of Shipping Certificate on proof load
- Note** : + 5% forging tolerance on inside width and length
: **Availability to be confirmed on request**



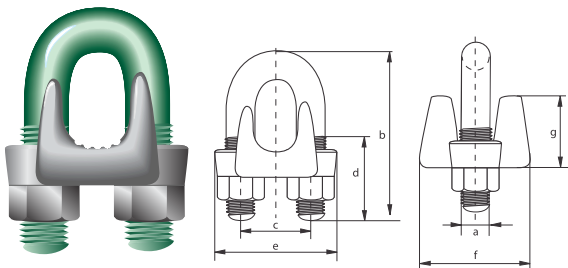
P-6036

working load limit	diameter bow	diameter pin	width inside	length inside	width bow	weight each
tons	a mm	b mm	c mm	d mm	e mm	kg
120	95	95	147	400	238	110
150	105	108	169	410	275	160
200	120	130	179	513	290	235
250	130	140	205	554	305	285
300	140	150	205	618	305	340
400	170	175	231	668	325	560
500	180	185	256	718	350	685
600	200	205	282	718	375	880
700	210	215	308	718	400	980
800	210	220	308	718	400	1100
900	220	230	328	718	420	1280
1000	240	240	349	718	420	1460
1250	260	270	369	768	450	1990
1500	280	290	369	818	450	2400

Green Pin® wire rope clips

generally to EN 13411-5 Type B

- Material** : Bridge : Drop forged high tensile steel SAE 1045
U-bolt : SAE 1015
- Standard** : EN 13411-5 Type B
Formerly U.S. Federal Specification FF-C-450D
- Finish** : Hot dipped galvanized nuts for diameter bow 5 and 6 mm are electro-galvanized
- Certification** : A works certificate can be supplied upon request



G-6240

diameter wire rope	diameter	length bow	width inside	length thread	length base	thickness base	height base	weight per 100 pcs	
inch	mm	a mm	b mm	c mm	d mm	e mm	f mm	g mm	
1/8	4	5	24	12	11	24	21	10	2
3/16	5	6	31	15	13	29	24	13	4
1/4	7	8	34	19	13	37	30	18	8
5/16	8	10	45	22	19	43	33	19	14
3/8	10	11	49	26	19	49	42	25	19
7/16	11	12	60	30	25	58	46	26	31
1/2	13	13	61	30	25	58	48	31	34
9/16	15	14	72	33	32	63	52	31	36
5/8	16	14	74	33	32	64	54	36	45
3/4	20	16	86	38	37	72	57	38	68
7/8	22	19	98	45	41	80	62	40	108
1	26	19	108	48	46	88	67	47	113
1 1/8	30	19	117	51	51	91	73	48	140
1 1/4	34	22	130	59	54	105	79	56	207
1 3/8	36	22	140	60	59	108	79	58	234
1 1/2	40	22	147	66	60	112	85	64	266
1 5/8	42	25	161	70	67	121	92	67	329
1 3/4	46	29	174	78	70	134	97	76	441
2	52	32	195	86	78	150	113	85	603
2 1/4	58	32	213	98	81	162	116	100	707
2 1/2	65	32	227	105	87	168	119	113	806
2 3/4	72	32	243	112	91	174	127	124	1000
3	78	38	271	121	98	194	135	136	1440



Netherlands